



PRODUMEX WMS

2021.03 RELEASE NOTES

MARCH 2021

WMS 2021.03 Highlights

Put Away Strategy and Move Restrictions

- New location attribute types and valid values for zones and bin locations in the Organizational Structure. You can use the location attribute types and valid values in the new Produmex Transaction Notification stored procedures for put-away suggestions and move restrictions.
- Possibility to define which destination locations the Mobile Client should display when putting away stock in the warehouse.
- New Produmex stored procedure connected to Transaction Notification to make sure that the stock is not moved to the wrong destination location within the warehouse.

Beas Manufacturing Integration

- When starting the Picklist for Production Flow, the Select a Picklist screen lists additional information on picklist.
- Taking communication with Beas Manufacturing to a next level

ProcessWeaver Integration

- With the ProcessWeaver integration shipping labels can be obtained in Produmex WMS without having to use the two systems separately.

UI Framework

- A new customization mode available for the Reception Flow of the Mobile Client to set screens and buttons in a way that is optimal for your warehouse.
- Possibility to define different customization for user groups and users

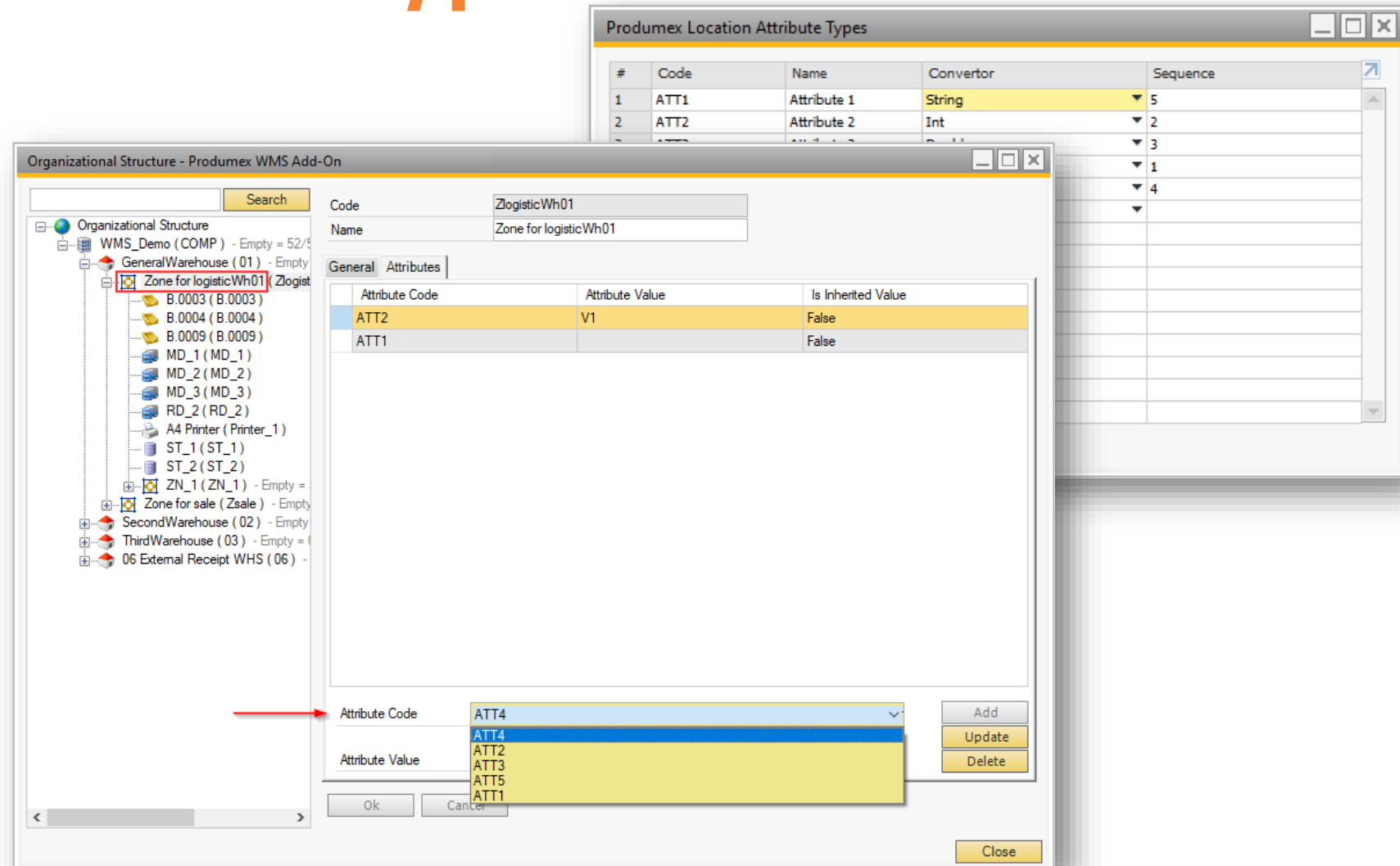
Additional changes

- Translations: a new Italian translation and an updated Spanish translation
- A new layout for HANA Report Setting Tool
- Produmex License Server: upgrading to version 2021.03

Location Attribute Types

Produmex Location Attribute Types
(PMX_OSAT) default form

- With the default form you can define attribute types for zones and bin locations.
- The defined attribute types can be selected in the Attribute Code drop-down menu.



The image shows two overlapping windows from the Produmex WMS Add-On software.

The background window is titled "Organizational Structure - Produmex WMS Add-On". It displays a tree view of the organizational structure. The "Zone for logisticWh01" is selected and highlighted with a red box. The tree includes nodes for "WMS_Demo (COMP)", "GeneralWarehouse (01)", "B.0003 (B.0003)", "B.0004 (B.0004)", "B.0009 (B.0009)", "MD_1 (MD_1)", "MD_2 (MD_2)", "MD_3 (MD_3)", "RD_2 (RD_2)", "A4 Printer (Printer_1)", "ST_1 (ST_1)", "ST_2 (ST_2)", "ZN_1 (ZN_1)", "Zone for sale (Zsale)", "SecondWarehouse (02)", "ThirdWarehouse (03)", and "06 External Receipt WHS (06)".

The foreground window is titled "Produmex Location Attribute Types". It has a table with the following data:

#	Code	Name	Converter	Sequence
1	ATT1	Attribute 1	String	5
2	ATT2	Attribute 2	Int	2
3				3
4				1
5				4

Below the table, there is a "General" tab and an "Attributes" tab. The "Attributes" tab is active, showing a table with the following data:

Attribute Code	Attribute Value	Is Inherited Value
ATT2	V1	False
ATT1		False

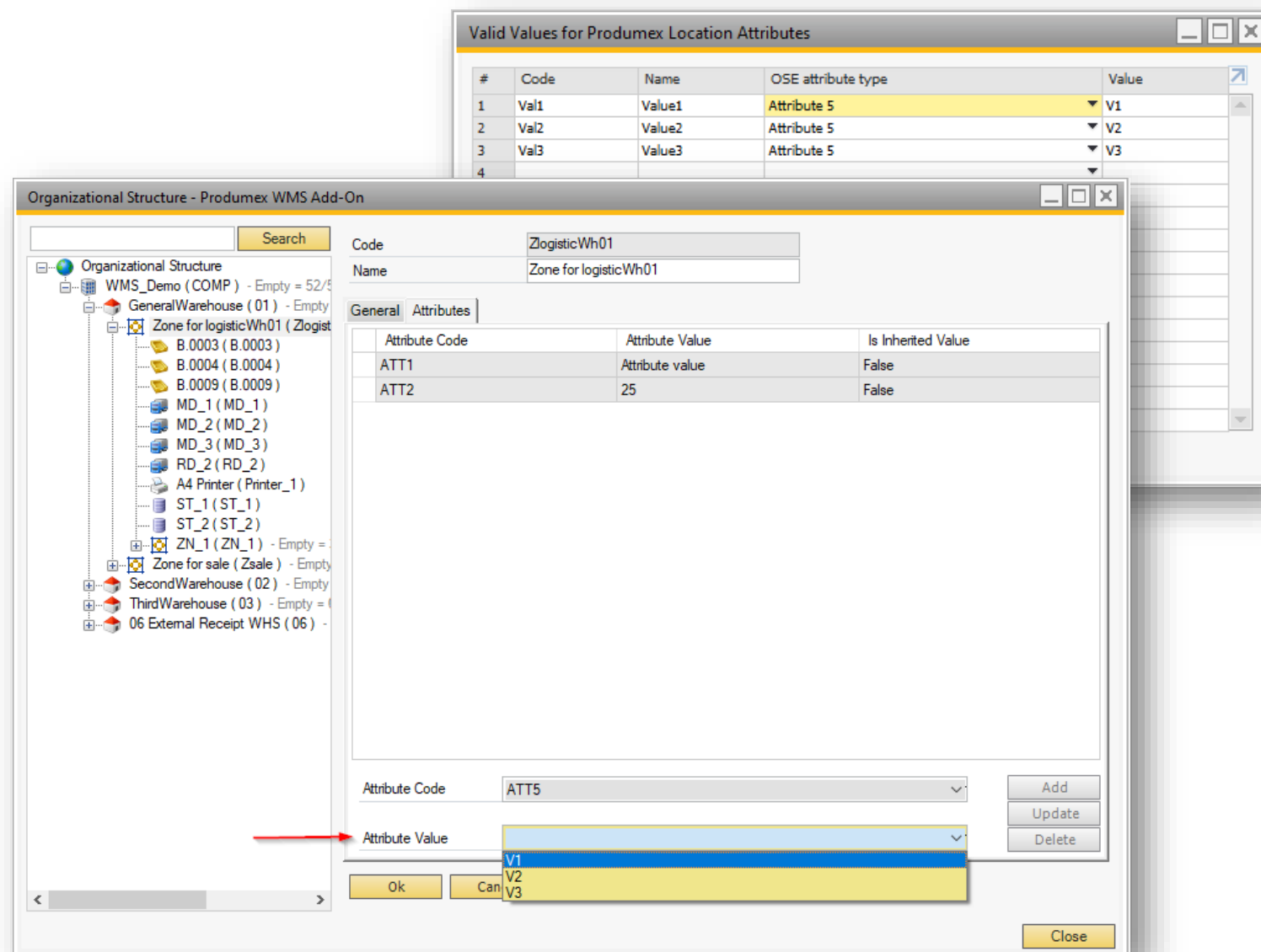
At the bottom of the "Attributes" tab, there is a form with the following fields:

- Code:** ZlogisticWh01
- Name:** Zone for logisticWh01
- Attribute Code:** A drop-down menu with a red arrow pointing to it. The menu is open, showing a list of attribute codes: ATT4, ATT2, ATT3, ATT5, and ATT1. ATT4 is currently selected.
- Attribute Value:** A text input field.
- Buttons:** Add, Update, Delete, Ok, Cancel, and Close.

Valid Values

Valid Values for Produmex Location Attributes (PMX_OAVV) default form

- With the default form define the valid values for those location attributes that have List convertor type on the Produmex Location Attribute Types (PMX_OSAT) default form.
- The defined valid values can be selected in the Attribute Value drop-down menu.



The image shows two overlapping software windows. The top window, titled 'Valid Values for Produmex Location Attributes', contains a table with the following data:

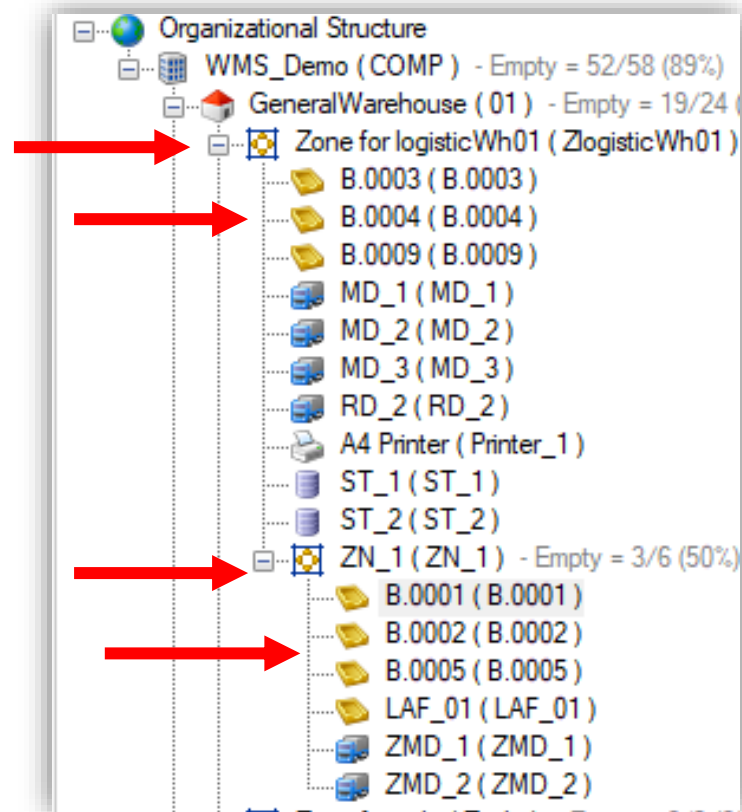
#	Code	Name	OSE attribute type	Value
1	Val1	Value1	Attribute 5	V1
2	Val2	Value2	Attribute 5	V2
3	Val3	Value3	Attribute 5	V3
4				

The bottom window, titled 'Organizational Structure - Produmex WMS Add-On', shows a tree view of the organizational structure on the left. The right pane displays details for 'ZlogisticWh01'. The 'Attributes' tab is active, showing a table of attributes:

Attribute Code	Attribute Value	Is Inherited Value
ATT1	Attribute value	False
ATT2	25	False

At the bottom of this window, there is a form to add a new attribute. The 'Attribute Code' is set to 'ATT5'. The 'Attribute Value' dropdown menu is open, showing a list of values: V1, V2, and V3. A red arrow points to this dropdown menu. Buttons for 'Add', 'Update', 'Delete', 'Ok', 'Cancel', and 'Close' are also visible.

Inheritance



Inherited location attribute types and values

The defined location attribute types and their values are automatically inherited from the main zone to sub-zones and bin locations and from sub-zones to bin locations.

General Cycle Coun Put away Attributes			
	Attribute Code	Attribute Value	Is Inherited Value
	ATT1	25	True
	ATT4	V4	False
	ATT5	V2	True
	ATT3	35.5	True

Location Attribute Types and Valid Values

You can use the location attribute types and valid values in the new Produmex WMS stored procedures for put-away suggestions and move restrictions.



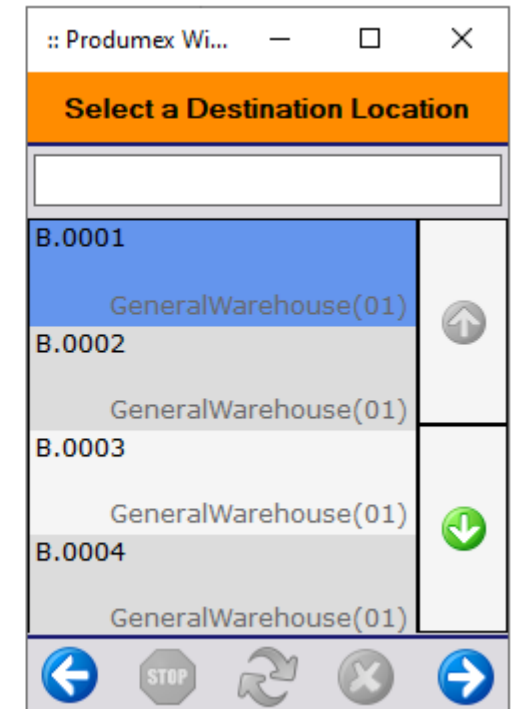
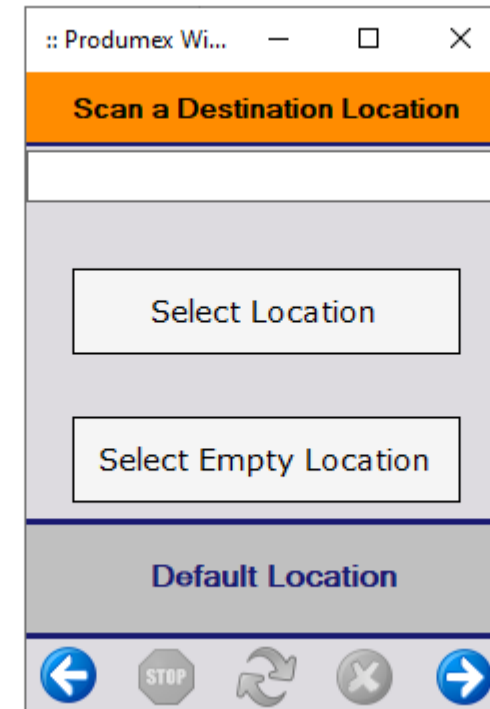
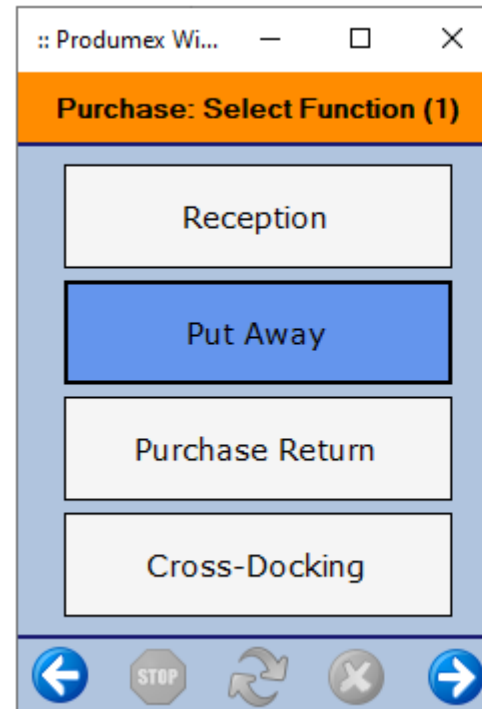
**Put Away
Strategy**

**Move
Restrictions**

Put Away Strategy

Possibility to define which destination locations the Mobile Client should display and use when putting away stock in the warehouse.

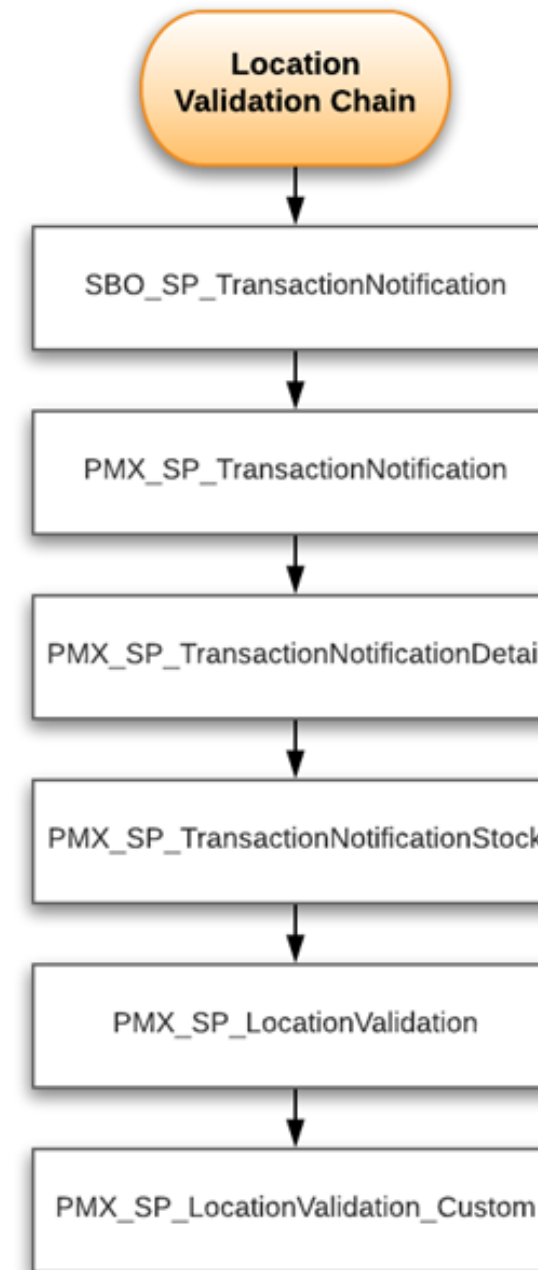
Based on the customization, the system allows for scanning or selecting only the authorized destination locations in the Put Way Flow.



Move Restrictions

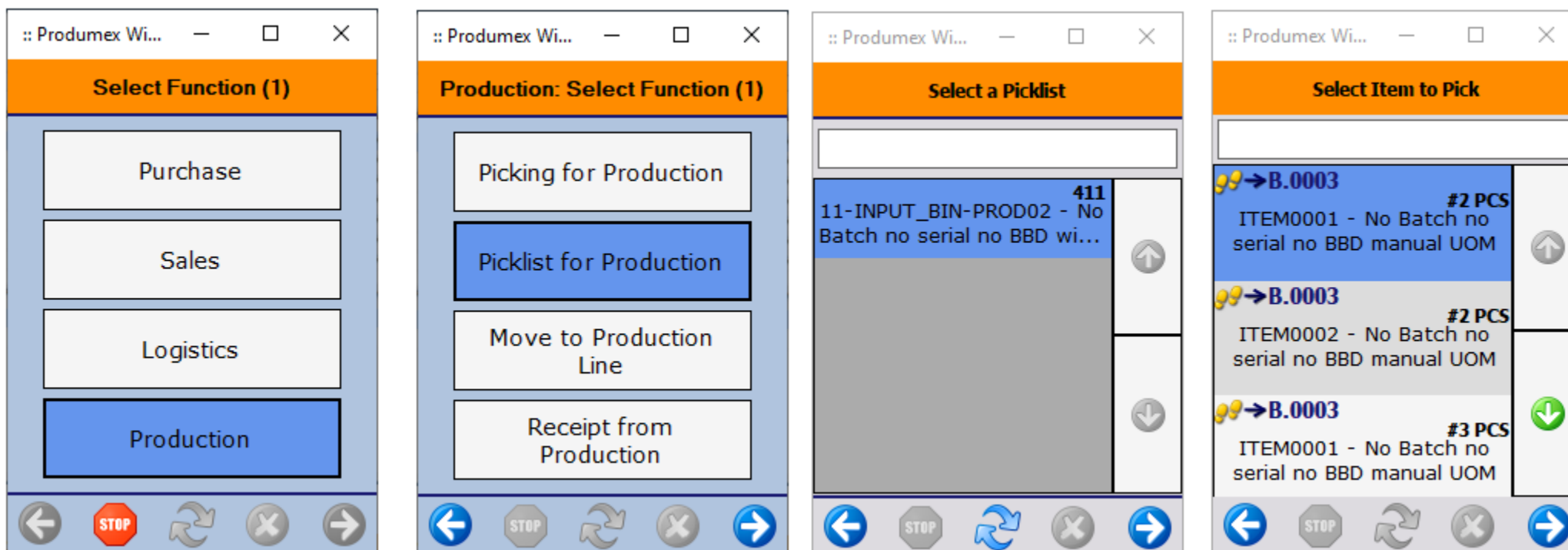
With the help of the new Produmex Transaction Notification stored procedures, you can also define restrictions. By editing a new stored procedure, you can make sure that the stock is not moved to the wrong destination location within the warehouse.

Through the validation location chain, all types of moves (including SAP Business One and Produmex moves) are validated.



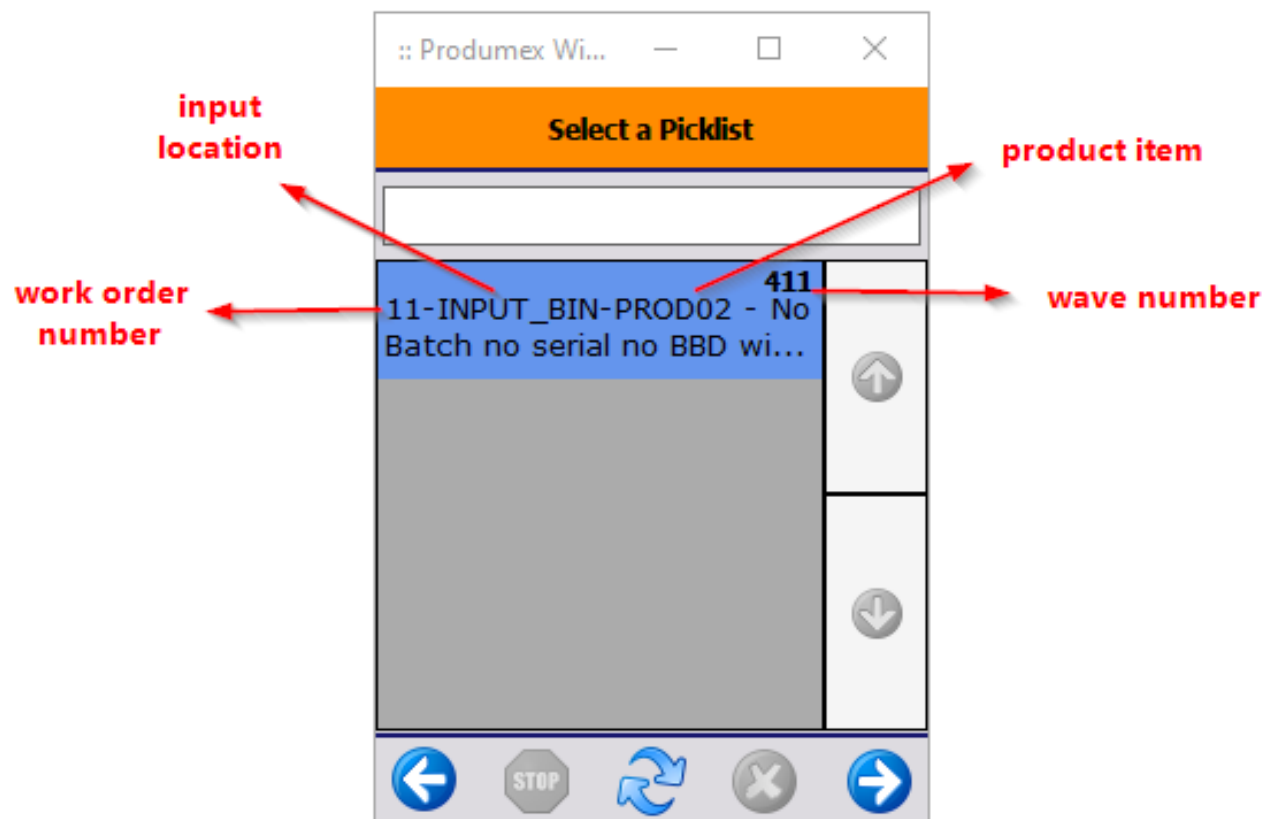
BEAS
MANUFACTURING

Integration



BEAS
MANUFACTURING

Integration



Integration

New documentation


See documentation on the following link: http://help.beascloud.com/BEAS_WMS_integration/

Beas - WMS integration

Contents | [Index](#) | [Search](#)

- [Introduction](#)
- [Beas - WMS complete process](#)
- [Available Features](#)
- [Installation](#)
- [Support to Produmex WMS Warehouses](#)
- [Picking components of Beas work order](#)
- [Limitations](#)
- [Planned Activities and Features](#)
- [Links](#)

Introduction



This documentation describes the integration between Beas Manufacturing and Produmex WMS.

The details described herein always represent the latest changes and improvements in the integration process, and therefore are updated upon each version update of both softwares.

Current versions:

[BEAS Manufacturing 2021.03](#)

[Produmex WMS 2020.12.12](#)

ProcessWeaver Integration

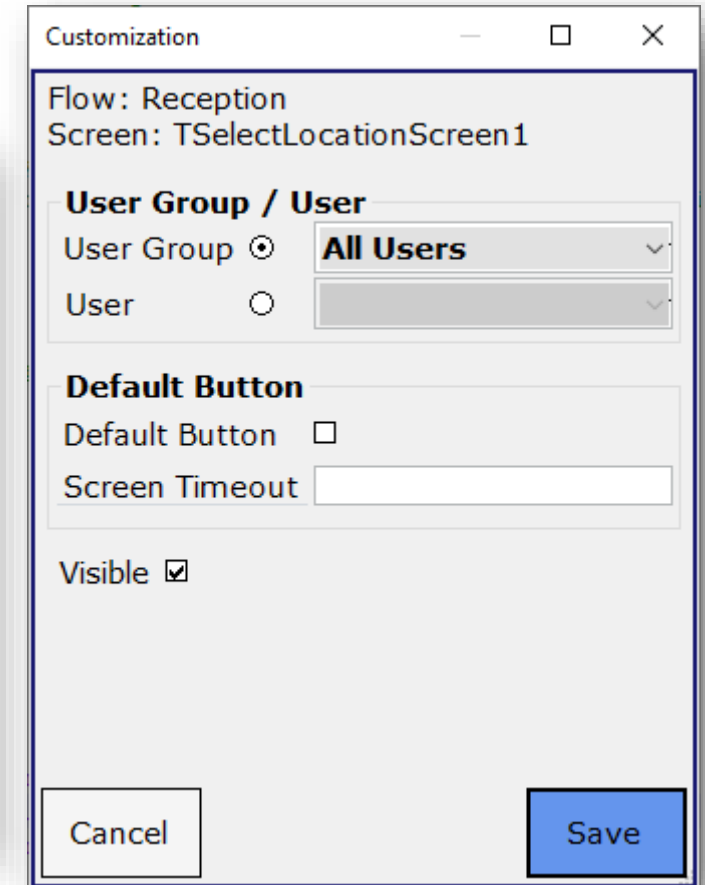
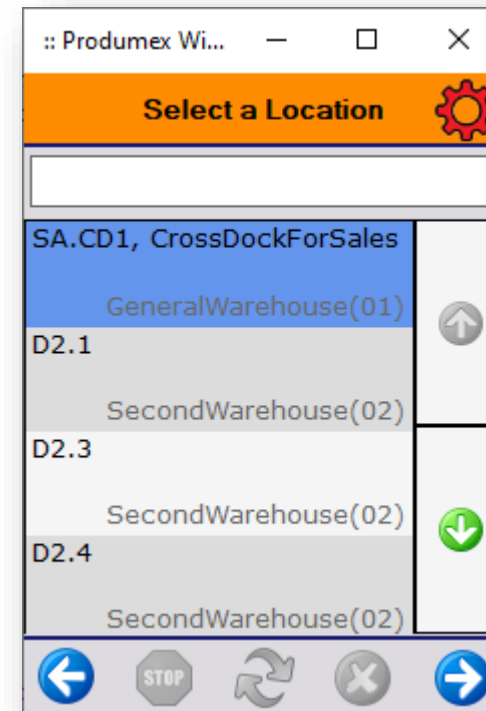
With the ProcessWeaver integration shipping labels can be obtained in Produmex WMS without having to use the two systems separately.

- Ad Hoc Picking Flow
- Bulk Shipping Flow
- Mobile Packing Flow
- Packing Flow
- Shipping Flow
- Picking Flow
- Multi-Picking Flow
- Zone Picking Flow
- Box Pick and Pack Flow
- Zone Box Picking Flow

UI Framework

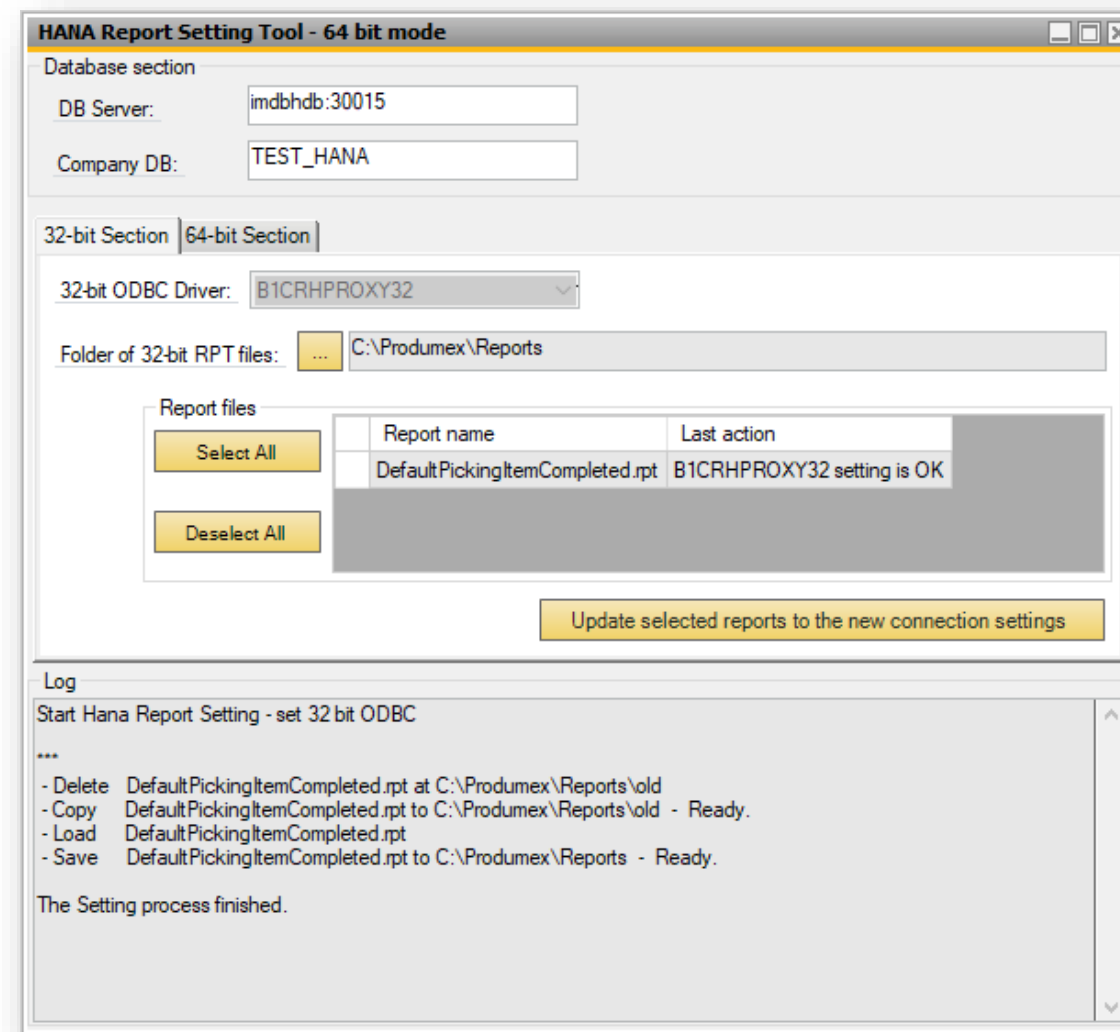
A new customization mode available for the **Reception Flow** of the Mobile Client

- Possibility to set screens and buttons in a way that is optimal for your warehouse
- Possibility to define different customization for user groups and users



Additional changes

- Translations:
 - a new Italian translation
 - an updated Spanish translation
- A new layout for HANA Report Setting Tool
 - 32-bit section
 - 64-bit section



Upgrading Produmex License Server

From product version 2021.03, Produmex WMS requires License Server version 2021.03 or higher and does not work with previous License Server versions.



Official documentation

The official documentation is available on the Produmex Wiki site.

<http://wiki.produmex.name/doku.php?id=implementation:releasenotes:202103>

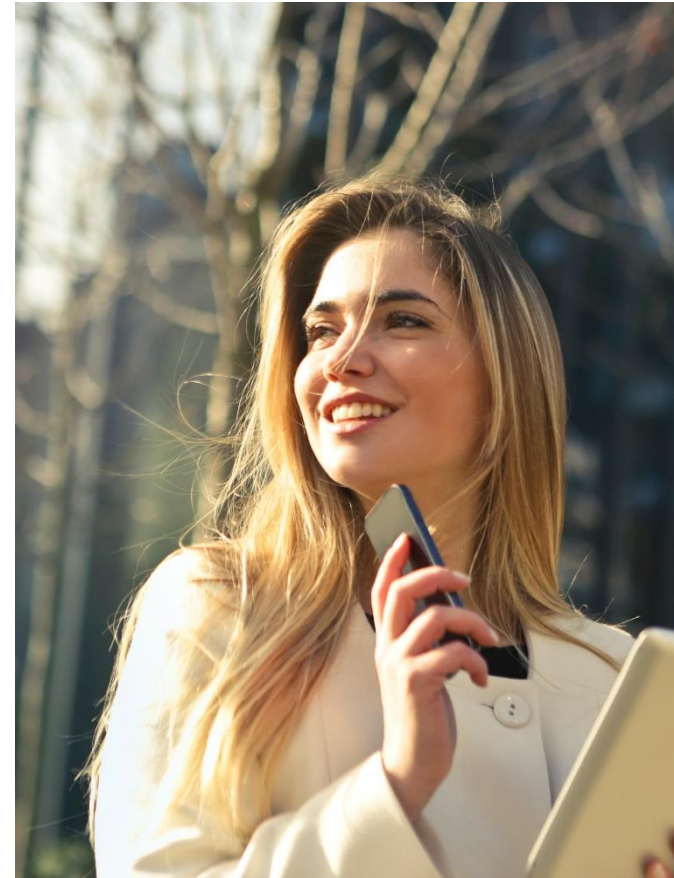
Your **voice** matters

We design solutions for people.

Join our community now!

Collaborate with product suggestions
and vote for the feature requests you
most like.

boyum-solutions.com/community



**DENMARK (Headquarters)****Boyum IT Solutions A/S**

Sintrupvej 71b, 1th
DK - 8220 Brabrand
+ 45 40 70 11 80

GERMANY**Boyum IT Solutions GmbH**

Borsigstraße 20
DE - 65205 Wiesbaden
+ 49 6122 170 90 90

USA**Boyum IT Solutions Inc.**

175 SW 7th St - Suite 1503
Miami - FL 33130, USA
+ 1 305 495 4737

CHINA**Boyum IT Solutions Shanghai Co. Ltd**

Room 602, No. 1438, North Shanxi Road
CN-20060 Shanghai
+ 86 1866 0177 317

BELGIUM**Boyum IT Solutions bv**

Rijvisschestraat 122
BE - 9052 Zwijnaarde
+ 32 9 248 16 60

SPAIN**Boyum IT Solutions Spain S.L.**

C/ Severo Ochoa 3 Oficina 4C - D
ES - 28232 Las Rozas de Madrid
+ 34 91 069 1636

HUNGARY**Boyum IT Solutions Hungary LTD**

Baross u. 52
HU - 1085 Budapest

