



Perfion on macOS

An overview

Steffen Biermann

Agenda

- ✓ Intro + background information
- ✓ Introduction of 2 options (to run Perfion on macOS)
 - ✓ Perfion on macOS via Parallels
 - ✓ Perfion on macOS via Remote Desktop Client
- ✓ Conclusion

Option 1: Perfion on macOS via Parallels



Perfion on macOS via Parallels

✓ Parallels system requirements

Parallels requirements (Minimum)
Intel Core 2 Duo, Core i3, Core i5, Core i7, Core i9, Intel Core M or Xeon processor
4 GB of memory (8 GB recommended)
500 MB for Parallels Desktop application installation; Additional disk space for the guest operating system (at least 16 GB is required for Windows 10)
macOS Catalina 10.15 macOS Mojave 10.14 macOS High Sierra 10.13 macOS Sierra 10.12

✓ Installation + administration

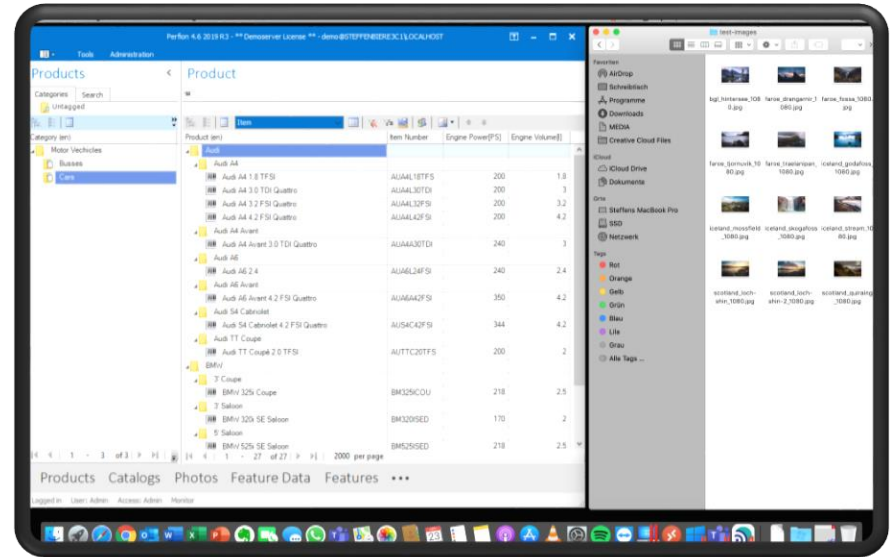
Parallels
All Perfion clients are supported → local Perfion server is also possible
Parallels provides a guided installation of itself + Windows
Initial effort: ≈ 30 – 60 minutes
No additional software + configuration required → e.g. VPN, network adaptor, data access
Full integration of macOS + Windows via Parallels → e.g. Network / cloud folder, local files
Parallels license: 99,99 EUR per year per client

→ **No astronomical requirements**

→ **No rocket science**

Perfion on macOS via Parallels

- ✓ Perfion + all mac apps can run in parallel
- ✓ Perfion client feels like a native app via 'Parallels Coherence Mode'
- ✓ Full integration with support of Drag'n'Drop, shortcuts and shared folder (e.g. cloud drive)



Showtime



*Option 2: Perfion on macOS via Remote
Desktop Client*



Perfion on macOS via Remote Desktop Client

- ✓ Native mac application directly from Microsoft
- ✓ No additional costs for users / clients (Remote Desktop Client is for free)
- ✓ Minimal setup efforts – simply use a ,RDC‘ shortcut to connect (*.rdp)
- ✓ No further configuration needed
- ✓ Remote Desktop also provides integration functionality (e.g. shared folders)

Showtime



Conclusion: *Don't worry, mac users!*

Administrators neither :)

 **Perfion** · Single Source of Truth

