

Add menus

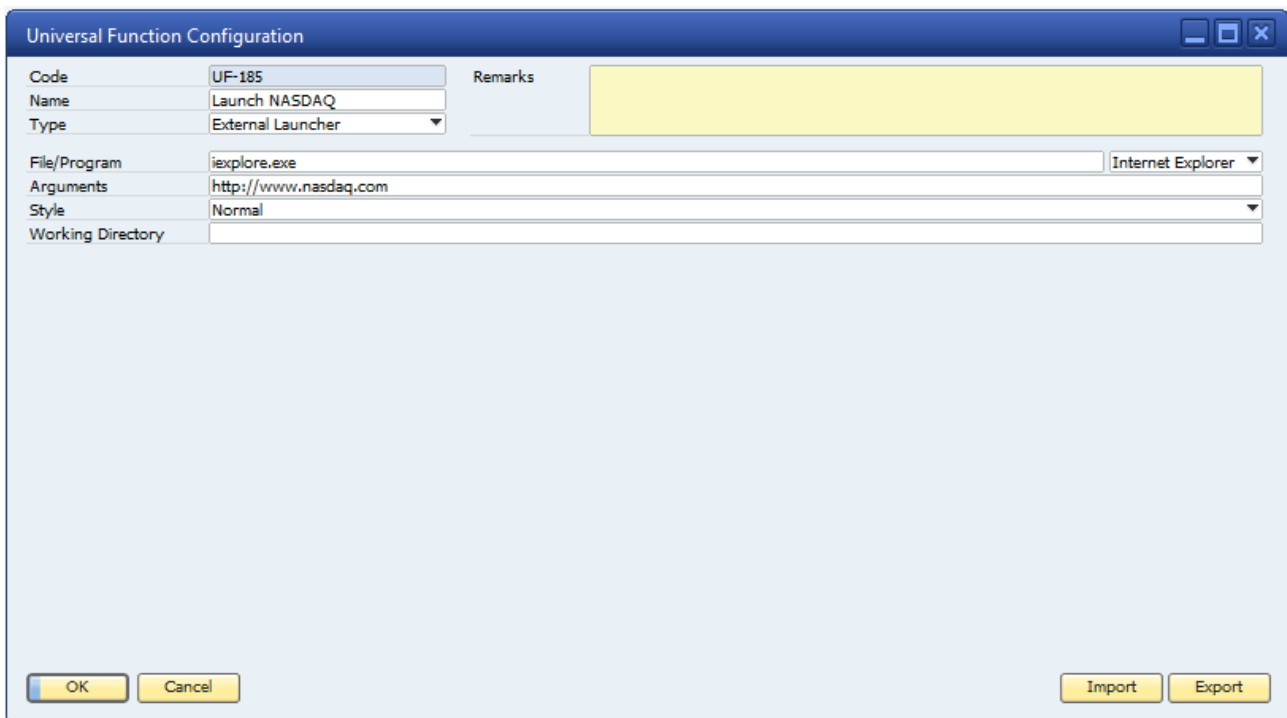
Summary	
Module	Add and Edit Menus, Universal Function
Level	Medium
Requirements	Version 2.9.2.0 or higher

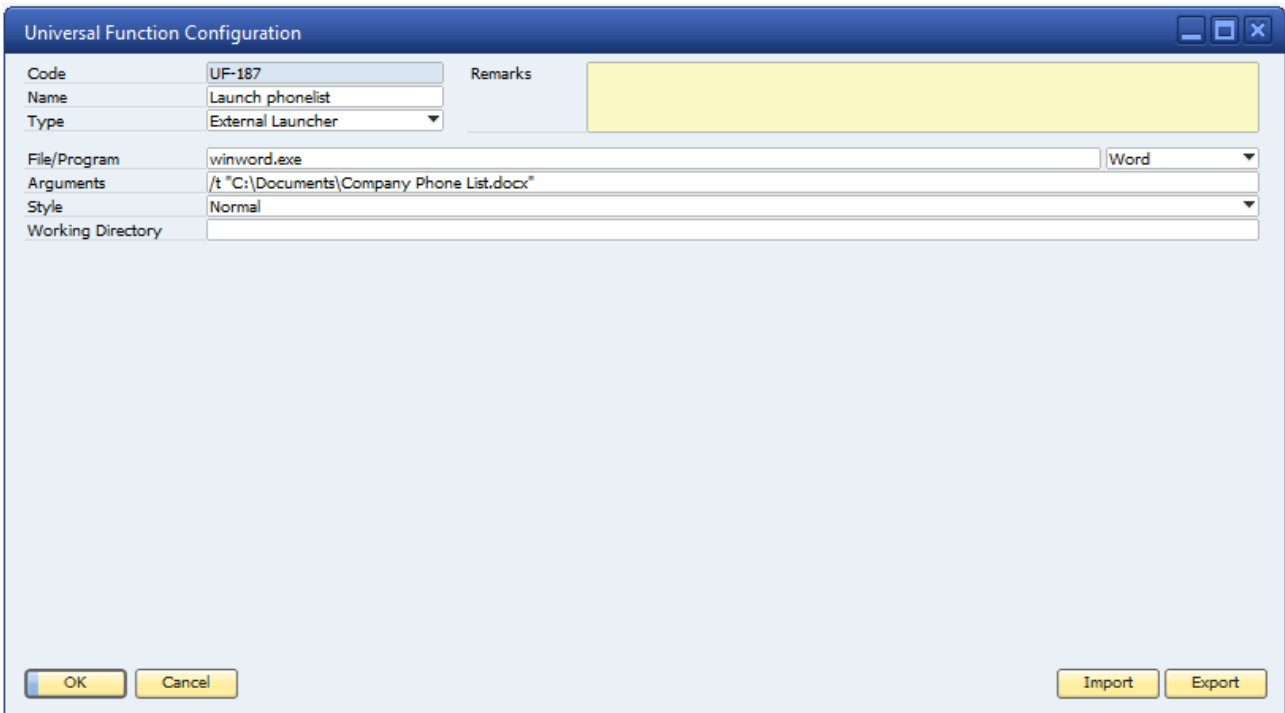
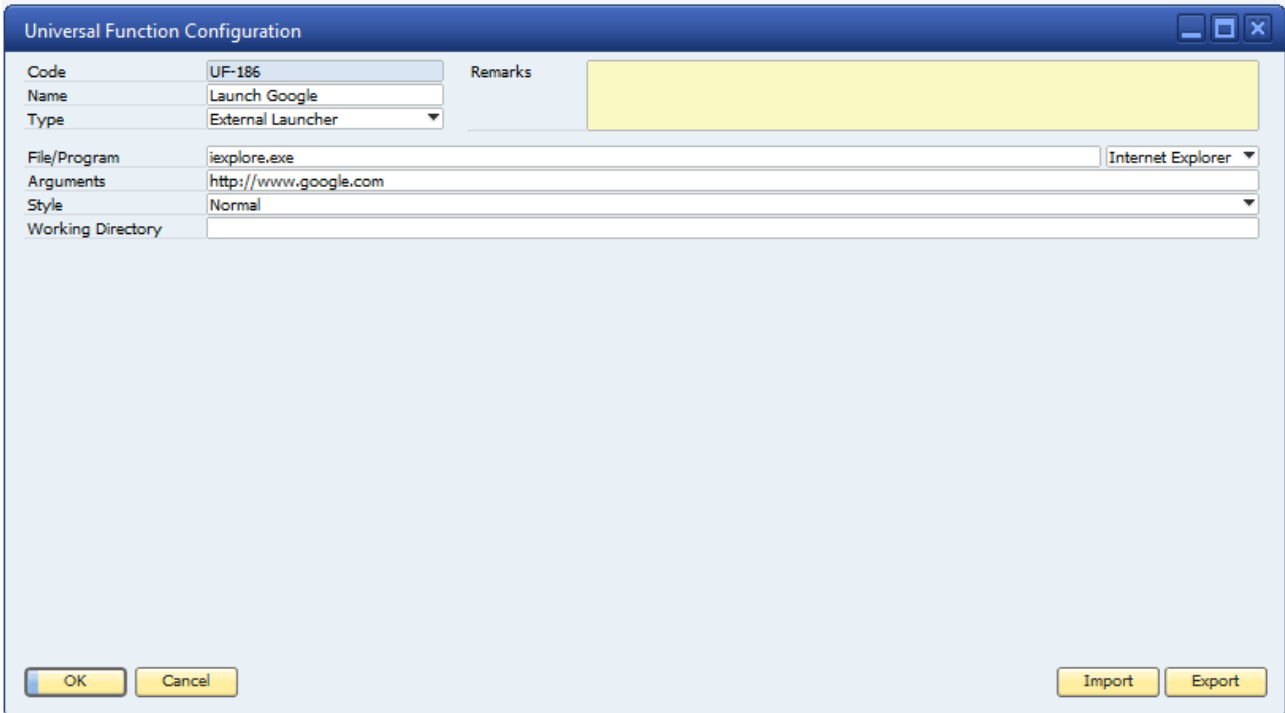
Scenario

The customer wants to make a new personal folder in the Main Menu, containing easy access to a couple of often used external applications.

Needed Configuration

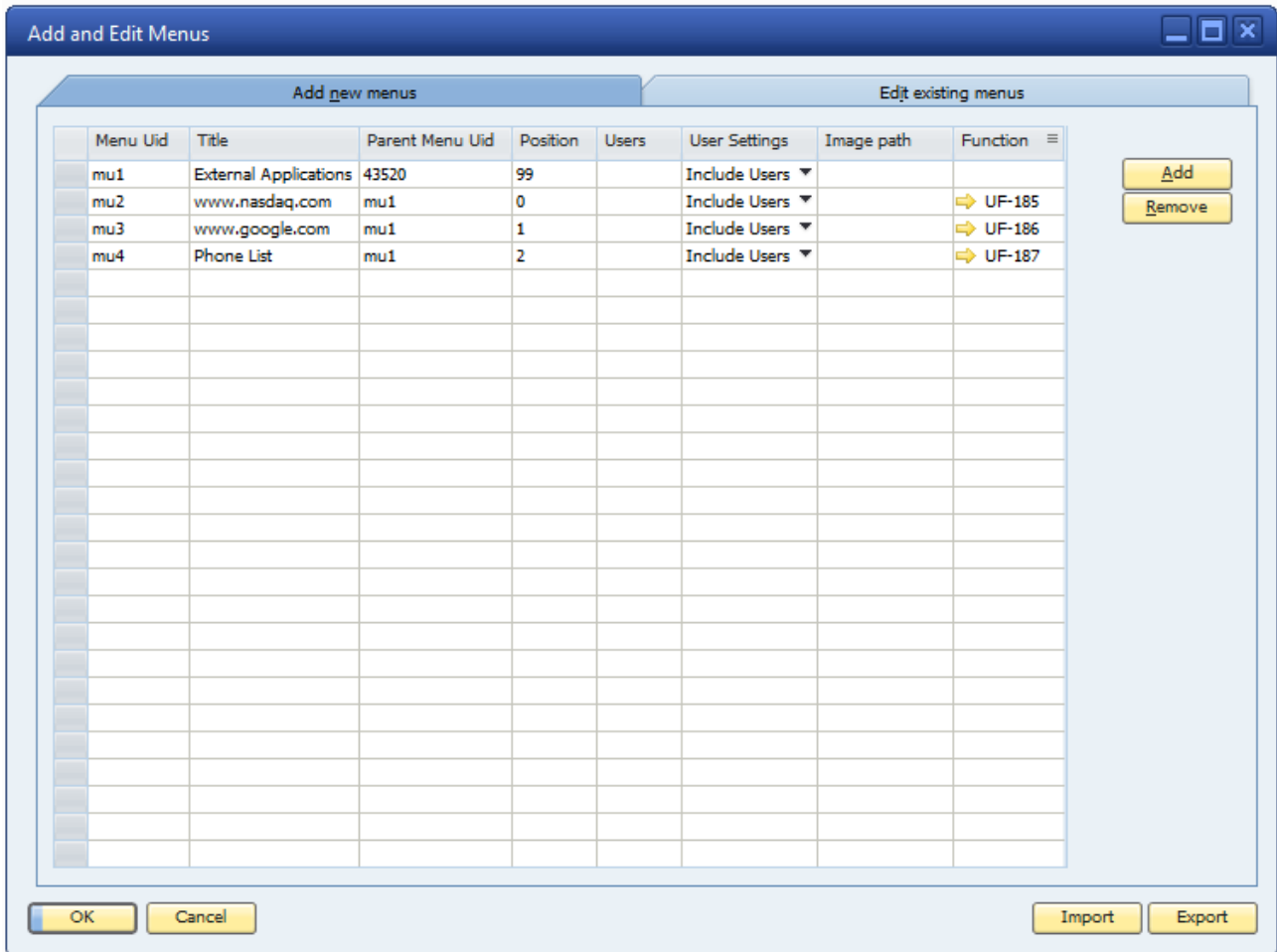
You will need to create a Universal Function for each external application you wish to be able to launch. Universal Functions are created from the Universal Function Configuration window: Main Menu > Administration > Add-Ons > B1 Usability Package > Module configuration > Universal Function Configuration. Below are three screenshots showing the Universal Functions needed:





After creating the Universal Functions, you will need to create a configuration for Add and Edit Menus as well.

The Add and Edit Menus Configuration window, can be found here: Main Menu > Administration > Add-Ons > B1 Usability Package > Module configuration > Add and Edit Menus. Below is a screenshot showing the configuration needed for this scenario:



Clicking the Add button will add a row to the matrix. Fill out the window with the four entries needed to create a menu containing three menu items. As shown above the Menu Uid's must be unique for each entry. The first entry has the Parent Menu Uid of 43520, which is the Uid of the Main Menu itself. Menu Uid's from menus and items in the Main Menu can be found by enabling System Information in View > System Information. This will show the unique id's of items in the lower left corner of the SAP Business One window. To see the unique id of the Main Menu, hold the mouse over the Modules menu in the upper part of the SAP Business One window. The screenshot shown below, shows the system information when holding the mouse above the Module menu, as mentioned above:

[Menu Uid=43520]

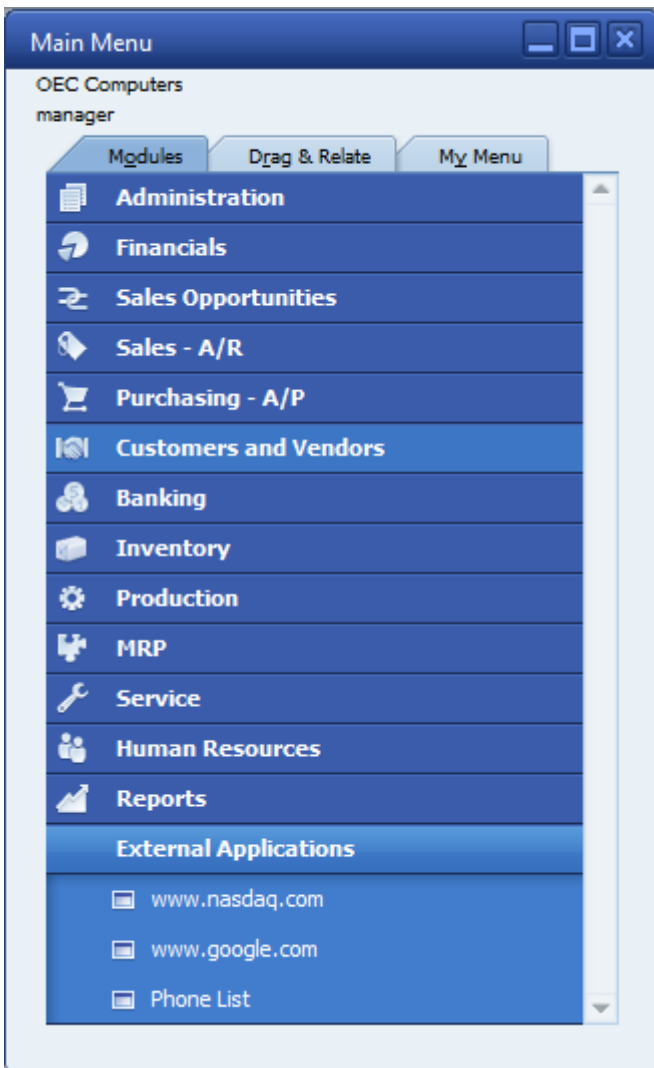
Choosing position 99 will place your menu at the final index, in the bottom of the Main Menu. If you want to make your menus or menu items personal you can do so, by entering your username in the Users column, selecting Include Users in the User Settings column.

The three last entries are the menu items contained in the menu. To do so, we must declare their Parent Menu Uid to be that of the menu we created above. The position of the menu items are inserted to decide in what order they are displayed in the menu. In a case like this, where we are creating a personal menu, you should have your own username in the Users column like when creating the menu. The same apply for the User Settings. Because we want the menu items to be visible to the user we entered, we select Include

Users. At last, we select the appropriate Universal Functions for our menu items. After updating this window, the relevant menus/menu items will be added the right places.

Use of functionality

The user configures the Add and Edit Menus add-on as mentioned above. Updating the Add and Edit Menu Configuration window will create the menu and menu items, as shown in the screenshot below:



To use the functionality simply open the External Applications menu and click on any of the three menu items to execute the associated Universal Function.